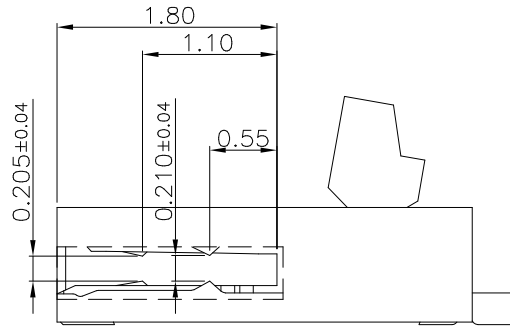
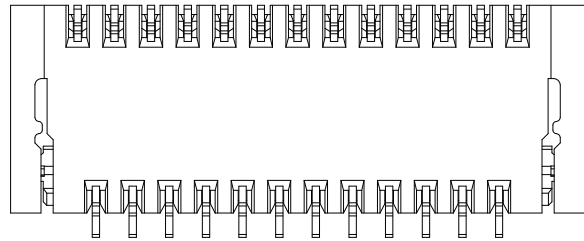
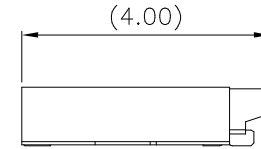
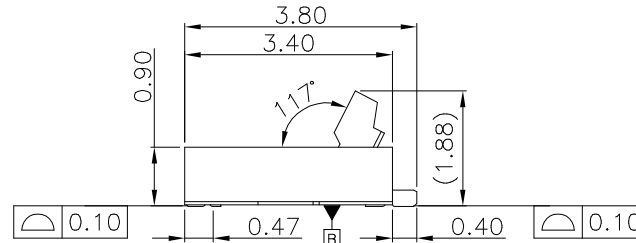
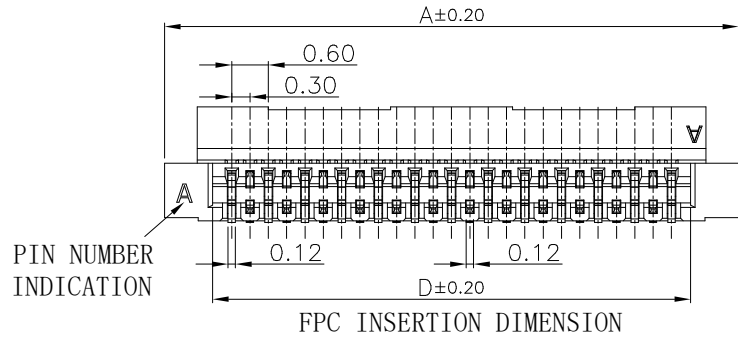
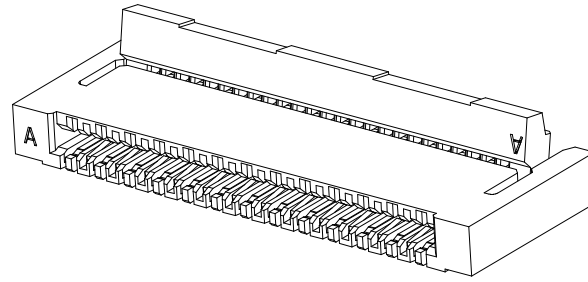
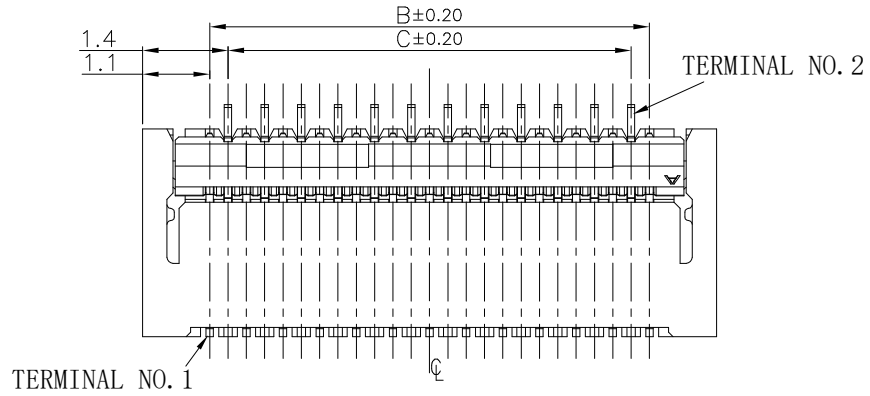
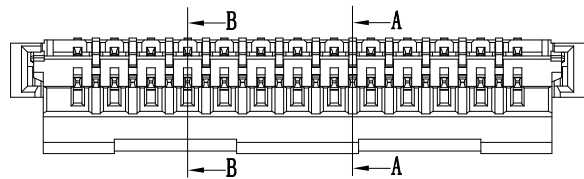


REV.	ECN.NO.	MODIFY.CONTENT	DATE
A		初版发行	06/21' 17



SCALE 2:1

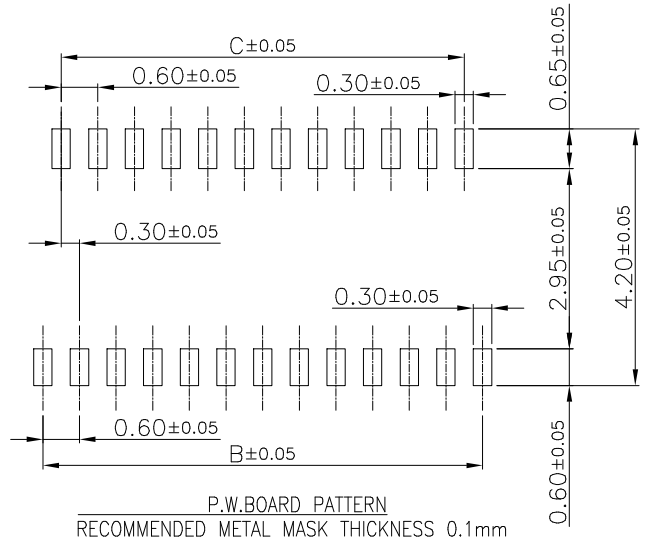


GENERAL TOLERANCE		DRAWN		SCALE	PART NO.	1F03007***C03—**
X.±0.30	x.'±1°	CHECKED		25/3	TITLE	0.3 FPC CONN
.X±0.25	.x'±0.1°	APPROVED		UNITS	mm	成品SPEC图
.XX±0.20		File NO.	F0300701S			
.XXX±0.10		REV.				蘇州祥龍嘉業電子科技股份有限公司
SHEET	1/2	Q'TY	1	A	Goldenconn Electronics Technology Co.,LTD	

注：此文件为双方检验的唯一标准

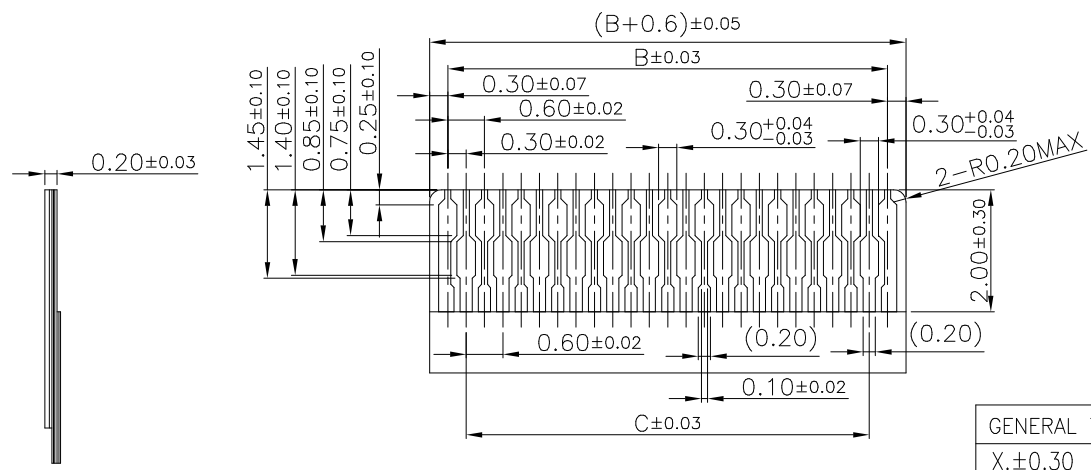
REV.	ECN.NO.	MODIFY.CONTENT	DATE
A		初版发行	06/21' 17

1F03007 * ** C 0 3 -**
 Gold plating H:3u" min E:4u" min PIN number
 00:Rohs HF:HALOGEN FREE
 Reel packing Natural color



NOTES:
 Insulator: LCP UL 94V-0(Color: Natural)
 Actuator: PA46 UL 94V-0(Color: Black)
 Terminal: phosphor copper C5240 Plating:
 Gold plating at contact and solder area over all Ni 40u"min plating
 Current Rating: 0.2A AC/DC
 Voltage Rating: 50V AC/DC Max
 Temperature Range: -30°C~+85°C
 Contact Resistance: 80 mΩ Max
 Insulation Resistance: 100 MΩ Min
 Withstanding Voltage: 250V AC/minute

No. of Contacts	Dimension			
	A	B	C	D
7	4.00	1.80	1.20	2.43
9	4.60	2.40	1.80	3.03
11	5.20	3.00	2.40	3.63
13	5.80	3.60	3.00	4.23
15	6.40	4.20	3.60	4.83
17	7.00	4.80	4.20	5.43
19	7.60	5.40	4.80	6.03
21	8.20	6.00	5.40	6.63
23	8.80	6.60	6.00	7.23
25	9.40	7.20	6.60	7.83
27	10.00	7.80	7.20	8.43
29	10.60	8.40	7.80	9.03
31	11.20	9.00	8.40	9.63
33	11.80	9.60	9.00	10.23
35	12.40	10.20	9.60	10.83
37	13.00	10.80	10.20	11.43
39	13.60	11.40	10.80	12.03
41	14.20	12.00	11.40	12.63
43	14.80	12.60	12.00	13.23
45	15.40	13.20	12.60	13.83
47	16.00	13.80	13.20	14.43
49	16.60	14.40	13.80	15.03



APPLY FPC RECOMMENDED DIM
 (THICKNESS 0.20±0.03)

GENERAL TOLERANCE		DRAWN		SCALE	PART NO.	1F03007***C03-**
X.±0.30	x.'±1°	CHECKED		25/3	TITLE	0.3 FPC CONN
.X±0.25	.x'±0.1°	APPROVED		UNITS	mm	成品SPEC图
.XX±0.20		File NO.	F0300701S			
.XXX±0.10		REV.		蘇州祥龍嘉業電子科技股份有限公司		
SHEET	2/2	Q'TY	1	A	Goldenconn Electronics Technology Co.,LTD	

注：此文件为双方检验的唯一标准